

2022 BIO International Convention

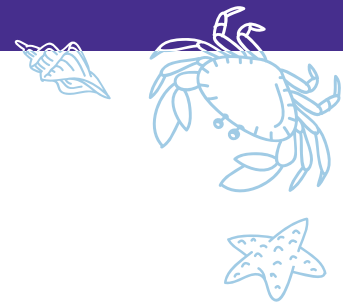
JUNE 13-16, 2022

California Pavilion

Exhibitor Directory

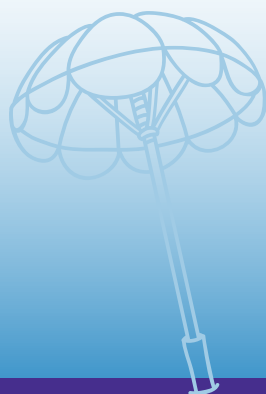
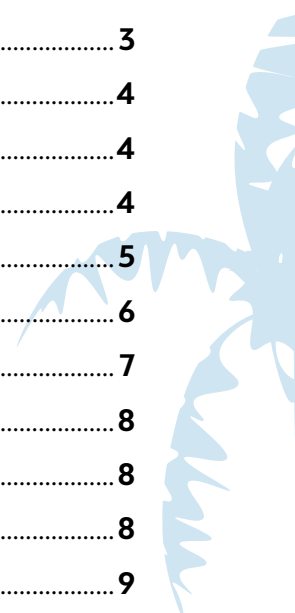
HOSTED BY

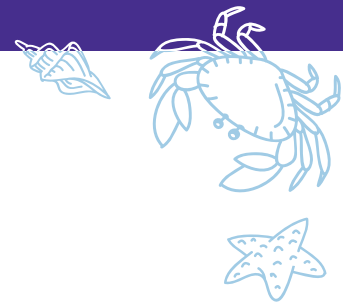




PAVILION PARTNERS

AldenMC.....	2
Aspen Biosciences.....	3
Back Bay Life Science Advisors.....	4
Bio Graphene.....	4
California Biotech Foundation.....	4
Biocom California.....	5
BioscienceLA.....	6
California Life Sciences.....	7
Cedars-Sinai Medical Center.....	8
IQVIA.....	8
Sysmex.....	8
City of Hope.....	9
City of Vacaville.....	10
ICE Consulting.....	11
Larta Institute.....	12
Longfellow.....	13
Moss Adams.....	14
Team California.....	15
Trefoil Therapeutics.....	16
XiltriX.....	17
Stockdale Capital Partners.....	17





For more than 35 years, **AldenMC** has been “Putting A Face On The Facts” for Life Science companies at every stage of their growth. We have sustained our mission to build a more diverse, robust and successful “Biotech Beach” community locally and globally. If you are seeking solutions to the challenges you are facing in getting your Life Science story seen, heard and understood, come talk to us. We just might have the strategic knowledge, experience and talent to help you communicate to key audiences more effectively.

Come visit our Kiosk at the California Pavilion Booth 3727 or set up a meeting on the BIO Partnering Platform, to learn more about how AldenMC can make a real difference in calibrating and

communicating your brand and message across your digital presence, presentations, animation/video, and marketing communications materials. We have a proven process, refined over many years, to develop bold, custom, and creative solutions that will raise your visibility, credibility, and clearly differentiate you from your competition.

AldenMC is purpose-built to help Life Science companies effectively navigate a complex landscape on the journey to bring best-in-class therapies to patients in need. We love the science and support the scientists who re-imagine the ways we can heal and live better.

Check us out at www.aldenmc.com

How can we improve your Marketing Communications efforts? Let’s talk.

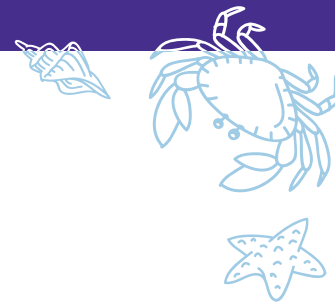


*Design is not what meets the eye,
but awakens the brain.*

Life Science Marketing Communications
www.aldenmc.com



aspen
biosciences



Aspen Biosciences is a leading provider of scientific software/informatics solutions for drug discovery, pharmaceutical, and cancer research organizations. We use our extensive experience in life sciences, drug discovery and agile software development to provide you with solutions for:

- **improving** the speed of discovery
- **scaling** the number of projects to meet the needs of new partnerships
- **reducing** the amount of data management needed to advance drug discovery programs.

OUR SERVICES

include informatics roadmap development, custom software solutions, ELN/LIMS implementations, system integration and lab automation.

OUR MISSION

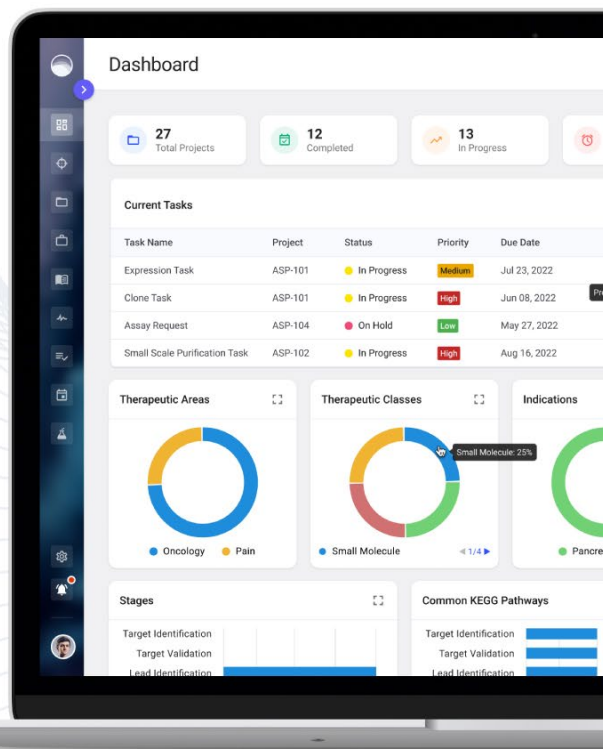
is to accelerate your life science R&D efforts. Learn how we can help your team leverage your existing software investments to accelerate your drug discovery and diagnostics research efforts while providing custom and cost-effective integrated solutions.

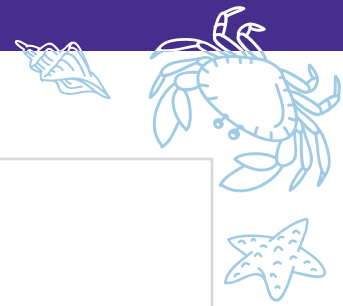


Pipeline: The New Research Management Platform for Drug Discovery

- Single Point of Reference for Projects, Targets, Literature, Assays, Requests and more
- Integrations with Internal and External Systems
- Customizable Project Visualization
- Smart Portfolio Management
- Task Management & Notifications

 **Learn more at**
aspenbiosciences.com/products-pipeline





ABOUT BACK BAY LIFE SCIENCE ADVISORS

Back Bay Life Science Advisors provides strategic and investment banking guidance and execution to global biopharma and medtech companies of all stages and sectors.

With unique integration of life science strategy and investment banking, Back Bay Life Science Advisors enables global companies and investors to make informed decisions regarding product development, commercialization, franchising, licensing, partnering, M&A, divestitures and more.

Back Bay Life Science Advisors is a top-ranked boutique consultancy with global reach

and network, partnering with life science organizations from Boston to California, Toronto to Copenhagen and worldwide. We work across life science ecosystems of all sizes to advance today's most promising treatments and healthcare technologies.

Visit www.bbbsa.com to get in touch with one of our advisors, subscribe to industry updates and listen to our podcast.

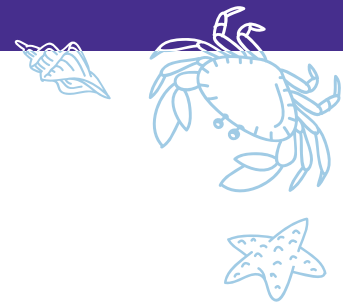
Back Bay Life Science Advisors
545 Boylston Street
Boston, MA 02116 USA
info@bbbsa.com • www.bbbsa.com
+1 617.236.0954



BioGraphene is a preclinical biotechnology company pioneering graphene-based nanomedicines for a healthier and better world. With offices in South Korea and the United States, BioGraphene's small but global team uses novel approaches to drive research and treatment development in multiple disease areas. The U.S. operation, located in downtown Los Angeles, specifically focuses on neurodegeneration with its lead indications as Niemann-Pick Disease Type C (NPC) and Parkinson's Disease (PD).



To tell the story of biotech in California, the **California Biotechnology Foundation**, a 501 (c) (3) public benefit corporation serves as a trusted resource for policymakers and key healthcare stakeholders, educating them about the life sciences industry in California. Since its inception in 2006, the California Biotechnology Foundation has enjoyed a long history of outreach and working collaboratively with policy makers to host events and briefings to connect the industry with key decision makers.



Biocom California

Biocom California is the largest, most experienced leader and advocate for California’s life science sector. We work on behalf of more than 1600 members to drive public policy, build an enviable network of industry leaders, create access to capital, introduce cutting-edge STEM education programs, and create robust value-driven purchasing programs.

Founded in 1995 in San Diego, Biocom California provides the strongest public voice to research institutions and companies that fuel the local and state-wide economy. Our goal is simple: to

help our members produce novel solutions that improve the human condition. In addition to its San Diego headquarters, Biocom California operates offices in South San Francisco, Los Angeles, Sacramento, Washington, D.C. and Tokyo. Our broad membership benefits apply to biotechnology, pharmaceutical, medical device, genomics and diagnostics companies of all sizes, as well as to research universities and institutes, clinical research organizations, investors and service providers.



Biocom California

We are the Advocate for Life Science in California

www.biocom.org

BioscienceLA

Catalyzing life sciences innovation in Los Angeles

Founded in 2018, **BioscienceLA** is the innovation catalyst for life sciences in the greater Los Angeles region, accelerating the growth of funding, space, and talent. The independent not-for-profit organization was seeded by LA County and has backing from Amgen, PhRMA, Richard Lundquist, Richard Merkin, City of Hope, and Cedars-Sinai, among others.

Its mission is to ensure that Los Angeles has a collaborative, well-coalesced ecosystem that encompasses biotechnology, pharmaceuticals, medical devices, medical diagnostics, bioinformatics, healthcare IT, medtech, digital health, and more. BioscienceLA aims to advance the region's capacity and pace of innovation by harmonizing the efforts of all stakeholders, including academic institutions, research hospitals, investors, startups, mature companies, trade associations, and public and quasi-public agencies.

BioscienceLA programs and initiatives include:

- BioFutures Internship Program (biofutures.biosciencela.org)

- Summer Internship Experience (sie.biosciencela.org)
- Culver City Collaboration Hub (culvercity.biosciencela.org)
- LAMedTechWeek.com (March) & LABioTechWeek.com (October)
- BioscienceLA.TV
- Plus, ongoing collaborations with Alliance for SoCal Innovation, Biocom California, Bio-Flex, California Life Sciences, UCLA Biodesign, and Wavemaker Three-Sixty Health

Visit the #BIO2022 California Pavilion (Booth 3727) to learn more about why LA is the best kept secret in life sciences. Plus, BioscienceLA.TV will be shooting Hollywood-quality video interviews on Tuesday and Wednesday. If you want to join in the fun, drop by our booth, tweet us at @biosciencela, or email info@biosciencela.org to schedule some time for your close-up.

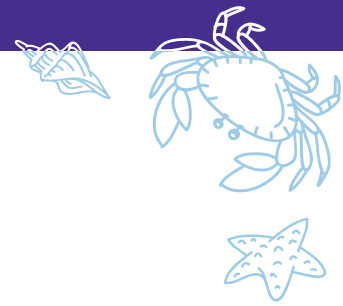
As a catalyst for innovation, BioscienceLA seeks to enable diversity, amplify science, and accelerate collaboration. When it comes to life sciences, we are #LongLA!

BioscienceLA

Catalyzing life sciences innovation in Los Angeles

Visit the #BIO2022 California Pavilion (Booth 3727) to learn more about why LA is the best kept secret in life sciences. Our team will be happy to help you and your organization get plugged into our growing innovation ecosystem.

Plus, **BioscienceLA.TV** will be shooting Hollywood-quality video interviews on Tuesday and Wednesday. If you want to join in the fun, drop by our booth, tweet us at @biosciencela, or email info@biosciencela.org to schedule some time for your close-up.



California Life Sciences (CLS) is the state's most influential and impactful life sciences membership organization, advocating for the sector and its diverse innovation pipeline. For more than 30 years, CLS has served the community by supporting companies of all sizes, from early-stage innovators and startups to established industry leaders in the fields of biotechnology, pharmaceuticals, and medical technology. As integral components of a healthy and collaborative ecosystem, CLS also works closely with universities, academic and research institutions, the investment community, and

other critical partners that promote this vibrant sector. With offices in South San Francisco, San Diego, Sacramento, Los Angeles, and Washington DC, CLS works to shape public policy, improve access to breakthrough technologies, educate lawmakers, and advance equity within our ecosystem by championing innovative solutions for some of the most pressing challenges of our times. In doing so, CLS fulfills its mission to protect and nurture California's life sciences industry, empowering discoveries that lead to healthier lives around the world. **#WeAreCaliforniaLifeSciences**

The State's Most Impactful Life Sciences Membership Organization

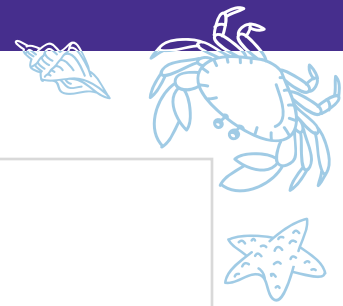


We are bringing our acclaimed FAST advisory program to SoCal, bringing customized, expert advising to entrepreneurs in the **San Diego, Orange County, and Los Angeles** ecosystems.



Helping an ever-increasing pool of early-stage life science innovators perfect their business models.

LEARN MORE AT: califesciences.org/fast-program



ABOUT SYSMEX

Sysmex is an In Vitro Diagnostics Company with the world's No. 1 market share in the hematology (Blood cell counting) field. The company has a number of proprietary analytical platforms and technologies for cell, gene, and protein analysis, such as flow cytometers, clinical PCR, and fully automated immunoassay systems. Sysmex products are used in 190 countries and the company operates 58 international offices including 4 R&D sites in the United States (Chicago, San Diego, San Francisco, Baltimore).

OUR COMMITMENT TO REGENERATIVE AND CELLULAR MEDICINE

Currently, we are strengthening our efforts in regenerative and cell medicine as a new business domain. Specifically, we offer the following applications. -Detection of undifferentiated iPS cells using culture supernatants, -Super resolution microscopy, -Pre-transplant immune rejection confirmation test using immune-synapse detection, -Fully automated measurement of paracrine molecules such as cytokines In addition to the above, we will utilize our measurement technologies to develop applications in various regenerative and cell medicine fields. If you are interested in the possibility of collaboration with us in any way, we would be happy to discuss it with you.



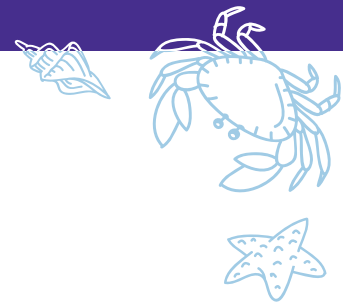
Cedars-Sinai is a nonprofit academic healthcare organization serving the diverse Los Angeles community and beyond.

Cedars-Sinai is known for its exceptional patient care, leading-edge medical research, comprehensive healthcare education, and wide-ranging community benefit activities.



IQVIA (NYSE:IQV) is a leading global provider of advanced analytics, technology solutions and clinical research services to the life sciences industry. IQVIA creates intelligent connections to deliver powerful insights with speed and agility — enabling customers to accelerate the clinical development and commercialization of innovative medical treatments that improve healthcare outcomes for patients. With approximately 74,000 employees, IQVIA conducts operations in more than 100 countries.

Learn more at www.iqvia.com.



City of Hope's mission is to deliver the cures of tomorrow to the people who need them today. Founded in 1913, City of Hope has grown into one of the largest cancer research and treatment organizations in the U.S. and one of the leading research centers for diabetes and other life-threatening illnesses. As an independent, National Cancer Institute-designated comprehensive cancer center, City of Hope brings a uniquely integrated model to patients, spanning cancer care, research and development, academics and training, and innovation initiatives. Research and technology developed at City of Hope has been the basis for numerous breakthrough cancer medicines, as well as human synthetic insulin and monoclonal antibodies. A leader in bone marrow transplantation

and immunotherapy, such as CAR T cell therapy, City of Hope's personalized treatment protocols help advance cancer care throughout the world.

With a goal of expanding access to the latest discoveries and leading-edge care to more patients, families and communities, City of Hope's growing national system includes its main Los Angeles campus, a network of clinical care locations across Southern California, a new cancer center in Orange County, California, scheduled to open in 2022, and Cancer Treatment Centers of America. City of Hope's affiliated family of organizations includes Translational Genomics Research Institute and AccessHope™. For more information about City of Hope, follow us on Facebook, Twitter, YouTube, Instagram and LinkedIn.



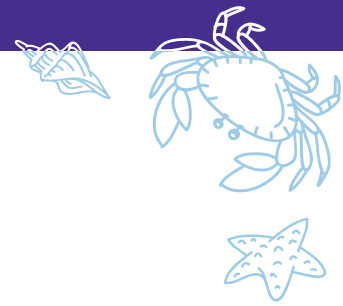
Advancing Discovery. Accelerating Access.

Rapidly translating scientific breakthroughs into lifesaving treatments for patients everywhere.

Visit us at Booth No. 3727 in the Exhibition Hall.

CityofHope.org





The **City of Vacaville** is in Northern California centrally located between San Francisco and Sacramento and is home to a cluster of biomanufacturers include Genentech, one of the largest biomanufacturing facility in the world. We're looking forward to sharing all the exciting things happening in the City of Vacaville as we prepare to expand the City's biomanufacturing hub. Join us as we make the Bay Area the national hub for biomanufacturing in the United States.

The New National Hub for Biomanufacturing

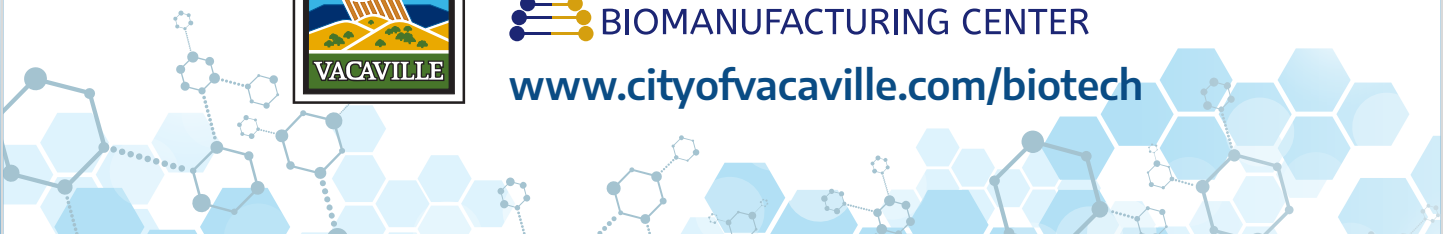
**Genentech • Novici Biotech • Agenus • Rainin • Durect
Polaris Pharmaceuticals • RxDNova Pharmaceuticals**

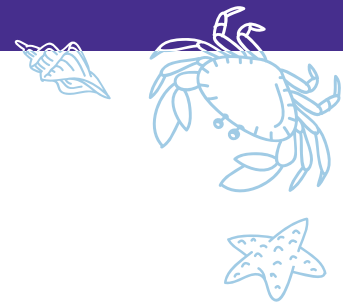
We're looking forward to sharing all the exciting things happening in the City of Vacaville as we prepare to make Northern California the national hub for biomanufacturing in the United States.



CALIFORNIA
BIOMANUFACTURING CENTER

www.cityofvacaville.com/biotech





ABOUT ICE CONSULTING

We believe the key to success in the life science Industry is remaining focused on your core business of scientific discovery. Since 1997, **ICE Consulting** has helped 2,000+ companies achieve this goal by taking the headache out of managing their IT and cybersecurity.

We've been helping startup and larger-scale biotech and life science firms build-out and migrate to new IT infrastructure and office space, expand research and development functions, begin clinical trials, and later commercialize products and/or complete initial public offerings.

IT infrastructure is critical to all of this—as is analyzing any security and threat-related information to keep these organizations and their intellectual property safe and secure. We have helped many of our

biotech/life science customers grow from just a few employees to more than 1,000 and have consistently been able to scale our services and offerings to best meet their needs. ICE Consulting has assisted biotech companies throughout all five stages of life sciences development, from startup to manufacturing/commercialization. Recognizing that business and IT needs and requirements are very different as a company grows, we have the experience and expertise firms require.

We offer a compelling range of services and a level of expertise that few other IT services companies can match. We are more than a managed service provider (MSP), we are also a managed security services provider (MSSP)— offering 24x7x365 security monitoring and response services. With our SOC-2 certification, we are also the go-to solution for all your compliance needs.



INTEGRITY.COLLABORATION.EXPERIENCE

For 25 years we have protected the Biotech Communities' work as a Managed Security Service Provider for the Life Sciences. We know firsthand the key to success in this industry depends on your ability to remain focused on your core business of scientific discovery.

Well, that is hard to accomplish now that we are in the midst of a full-blown 'Cyber Pandemic.' According to IBM and the Ponemon Institute:

- ✓ The average total cost of a data breach rose from 3.84 million to 4.69 million (the largest figure in the history of this report)
- ✓ 60% of businesses are now closing their doors within 6 months of their first data breach
- ✓ The Life Science Industry has sustained greater losses than any other industry over the past few years

As biotech companies scale securing their IT is often overlooked, creating the very vulnerabilities that are being exploited during this pandemic. Everyone is aware of the problem, but few know where to start... well ICE is here to help you take the first step in protecting your organization!



Live Support



Est. 1997



SOC 2 Certified



97% CSAT Score

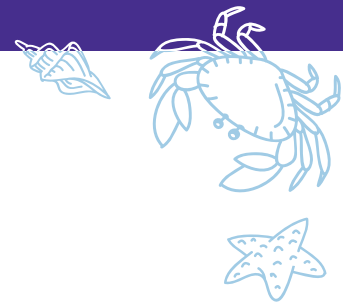
We are offering all BIO CONVENTION attendees \$2,500 Network Security Scans for FREE!

To find out more info or schedule your today visit us at:

<https://www.iceconsulting.com/freenetworkscan>

FIRST COME, FIRST SERVE BASIS

CALL US FOR MORE INFORMATION AT
888-423-4801



Let's feed,
fuel & heal
the world.

Larta Institute is a 501(c)(3) non-profit organization accelerating innovation & entrepreneurship.

Our mission is to foster science & technology innovation for a sustainable planet.

Our planet is experiencing significant global problems created by human behavior and policies affecting the environment, food, education, energy, & healthcare systems. New science & technology plays a critical role in transforming how we sustainably feed, fuel, and heal the world.

Larta was founded in 1993, in Los Angeles, as California's regional technology alliance to stimulate the economic development of technology-based enterprises.

Larta quickly became the national partner for numerous federal government agencies to commercialize novel research & innovation - including DARPA, NIH, DOE, NSF, NIST, NOAA, and USDA.

Today, our innovation platform & ecosystem accelerate new science & technology from idea to sustainable enterprise - by providing a unique combination of connections, resources, and funding.

We have helped over 4,500 startups, and our alumni have raised over \$6.5 billion in funds.

Together, let's feed, fuel, and heal the world.



Powered By:

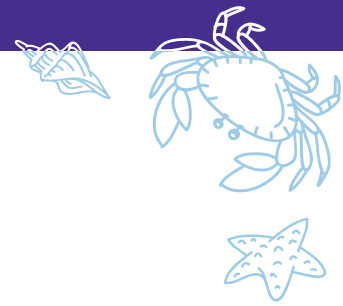


Heal.LA is a new collaborative initiative to improve the health & wellness of Los Angeles County and beyond.

Scan the code or visit **Larta.org/Heal** for more information.



Applications are now open for our Bioscience & Healthcare Accelerator Program.



LONGFELLOW

Longfellow partners with leading universities, institutions and companies to deliver holistic real estate solutions for life sciences and technology organizations. We invest in and develop real estate assets to create transformational work environments. We also provide leasing, facilities and property management services for our tenant partners. We love investing in property. Buildings. Structures. They're tangible. Real. Dreaming up ideas that become a reality. Having a vision and knowing how to execute. When it all comes together, when our spaces are filled with people creating the next big thing, we listen, learn and iterate to make it even better. Then we get ready to do it again. We

know how to put capital to work and deliver on ambitious challenges. We deliver quality experiences on time and on budget. We've got a lifetime of experience delivering real estate for lab users and the innovation economy. But it's not just about building structures. It's about the people and companies inside them that are making the innovation economy in real time. We want our places to sing with creativity and connections. We believe in the power of the work environment to nurture and grow both companies and people. Now that's exciting.



Inspiration
is everywhere.

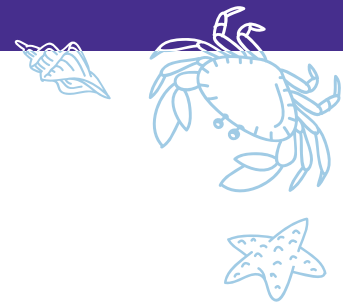
Ever notice how brilliant birds are about site selection, design and construction? At Longfellow, we find inspiration everywhere, just like our clients do. From single buildings to entire districts, we're the top life science provider across our markets. And our tenant services program, *Elevate*, is in a realm of its own. What are your real estate goals and dreams? Let's have a conversation.

Boston • Durham • Research Triangle • Bay Area • San Diego • New York City • United Kingdom

Longfellow partners with leading universities, institutions and companies to deliver holistic real estate solutions for life sciences and technology organizations. We invest in and develop real estate assets to create transformational work environments. We provide leasing, facilities and property management services for our tenant partners.

3.2 M sf
available

info@lfrp.com
lfrp.com



In a global marketplace, whether you're a life sciences or medical device company, your commitment to innovation drives progress. From conducting clinical trials to bringing cutting-edge products to market, you realize the importance of staying ahead of the curve at every step of the business life cycle. Engaging a team that intimately understands your industry's complexities gives you the ability to stay focused on what drives you: creating a healthier tomorrow.

Moss Adams offers a full range of services that spans accounting, consulting, and wealth management. Beyond analyzing your financial statements and addressing your tax and assurance needs, we offer a coherent, solutions-based approach catered to your industry's unique complexities.

MOSSADAMS.COM / LIFESCIENCES

OPPORTUNITY RISES IN THE WEST

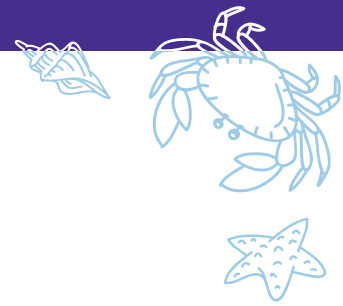
Life sciences and medical devices companies face a unique set of operational and financial challenges, from conducting clinical trials to bringing products to market to expanding operations—all within a complex regulatory environment. How do successful businesses overcome these hurdles? It starts with seeking out the right mix of industry-specific accounting, tax, and consulting expertise.

We are proud to support the California Pavilion at the 2022 BIO International Convention.

RISE WITH THE WEST.

Assurance, tax, and consulting offered through Moss Adams LLP. ISO/IEC 27001 services offered through Cadence Assurance LLC, a Moss Adams Company.
Investment advisory offered through Moss Adams Wealth Advisors LLC. Services from India provided by Moss Adams (India) LLP.





TeamCalifornia

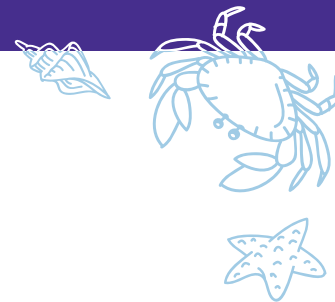


TeamCalifornia is a private, non-profit membership-based corporation that represents every city, county and Economic Development agency across the state. A confidential centralized information source for expanding and locating a business in California, TeamCalifornia's members know how to expedite projects and are valuable sources of information for site location assistance anywhere in the state.

OUR SERVICES INCLUDE:

- Relocate a Business to CA
- Expand a business in CA
- Centralized Point of Contact for the Entire State
- Employment Training Dollars
- Project Expediting
- Incentive Referrals





TREFOIL THERAPEUTICS COMPANY OVERVIEW

Trefoil Therapeutics is developing novel engineered FGF-1 compounds to treat corneal endothelial and epithelial dystrophies.

The innovative engineered FGF-1 platform was developed by Florida State University and there is a strong patent portfolio for the platform based on both the FSU and Trefoil's own development program. Trefoil has been supported in its development program through a collaborative research contract with the Therapeutics for Rare and Neglected Diseases (TRND) program within the National Center for Advancing Translational Sciences (NCATS).

The lead compound (TTHX1114) is unique in addressing multiple unmet needs in diseases that affect the front and back of the cornea by mimicking natural biologic processes associated with cell proliferation

and migration. The lead indication is an intracameral injection that will treat Fuchs Dystrophy and associated endothelial conditions. The company is also developing a topical formulation of TTHX1114 that will treat ulcerative conditions on the front of the cornea. The initial focus is on treating ulcers associated with herpetic keratopathy. An initial P2 clinical trial in Fuchs Dystrophy has been completed.

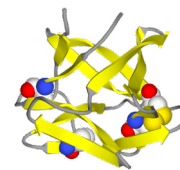
The company completed a Series 1 financing in December 2016, from a consortium of five investors, led by Hatteras Venture Partners. In 2019 a Series A financing of \$28M led by new investor Bios Partners was completed with all five original VCs participating; joined by Access Healthcare Ventures. The company now has funding for the completion of proof-of-concept studies in Fuchs Dystrophy as well as initial P1/P2 studies for the topical epithelial indication.

Restoration Through Regeneration

Trefoil Therapeutics is dedicated to restoring lost vision by developing therapeutics based on a novel, engineered version of the naturally occurring protein FGF-1.

One molecule. Two products. Multiple indications.

- Endothelial dystrophy via intracameral injection
- Corneal ulcers via topical formulation



LEARN MORE: TREFOILTHERAPEUTICS.COM

Visit us at California Pavilion: Booth 3727

XILTRIX

24/7 LAB MONITORING-AS-A-SERVICE

XILTRIX NORTH AMERICA PROVIDES LAB MONITORING-AS-A-SERVICE.

As lab monitoring service providers for 30+ years, our team will address all of your equipment, environmental, and facility monitoring needs with 24/7 support to safeguard critical scientific assets.

Having obtained our ISO 9001:2015 certification, **Xiltrix** is committed to providing a high-quality, white-glove service to our customer base. With a service custom to every client's lab and business goals, we can solve all your hardware, software, and reporting needs. [Learn more about critical parameters for cleanroom monitoring.](#)



STOCKDALE
CAPITAL PARTNERS

ABOUT STOCKDALE CAPITAL PARTNERS

Stockdale Capital Partners is a vertically integrated real estate investment firm focused on investments throughout the Southwest. The company is an owner-operator specializing in the redevelopment and repositioning of real estate assets in leading regional markets, with expertise in revitalizing urban properties of all types. Among its many projects, Stockdale is currently redeveloping Horton Plaza into a science, technology and engineering cluster in Downtown San Diego. Upon completion in early 2023, the Campus at Horton will be one of the largest adaptive reuse and urban mixed-use tech and life sciences campuses in the western United States. The one-million square-foot mixed-use campus will feature 700,000 square feet of sustainably driven office/lab space and 300,000 square feet of restaurants, entertainment, wellness and lifestyle-oriented retail — spanning ten acres and seven city blocks in the heart of Downtown San Diego.

CALIFORNIA PAVILION Welcome Reception

Monday, June 13, 5:00-6:30PM | Booth 3727

*Join us for a glass of California cabernet
or a hoppy West Coast IPA to welcome
BIO Convention back to San Diego*